

CHONGQING
SUNKINGDOM

New!

LS-Series
Ophthalmic Slit Lamp



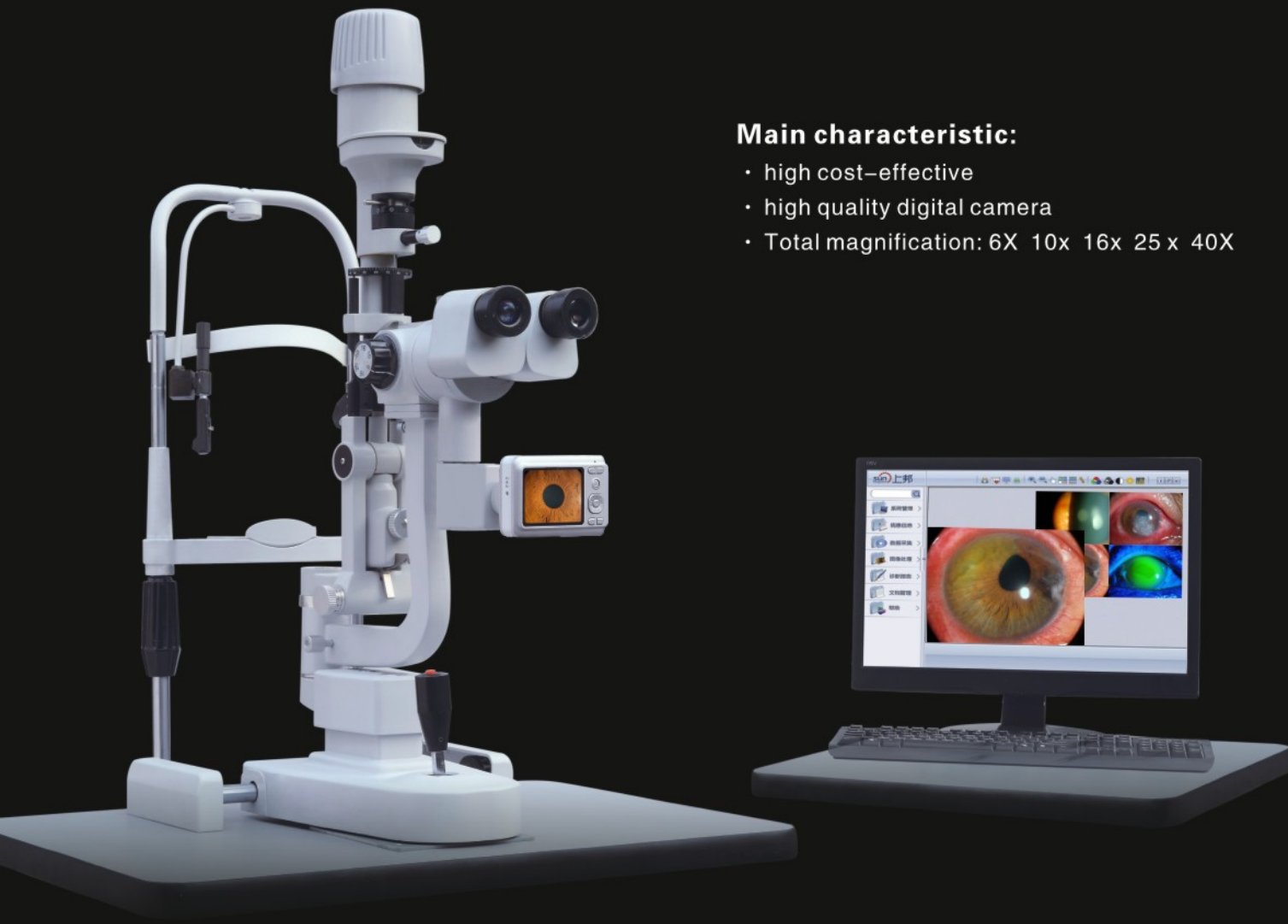
Manufacturer: ChongQing Sunkingdom Medical Instrument Co.,Ltd
Add: 1601,West Paradise International,No.48 ZhuJiang Road,YangJiaPing,
JiuLongPo District,ChongQing,China
Tel: 86-23-68643990 86-23-68102779
Fax: 86-23-68102793
Website: www.skoptic.net
Email: joy_xien@163.com faihe@sunkingdom.com

SUNKINGDOM

SK MEDICAL DEVICE

LS-6 Digital Slit Lamp (economical type)

LS-6 Digital Slit Lamp (professional type)

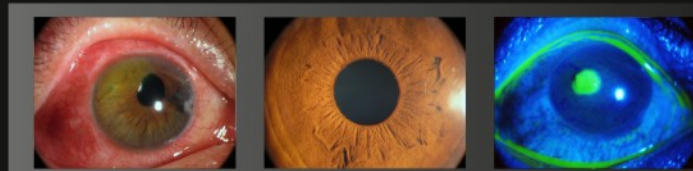


Main characteristic:

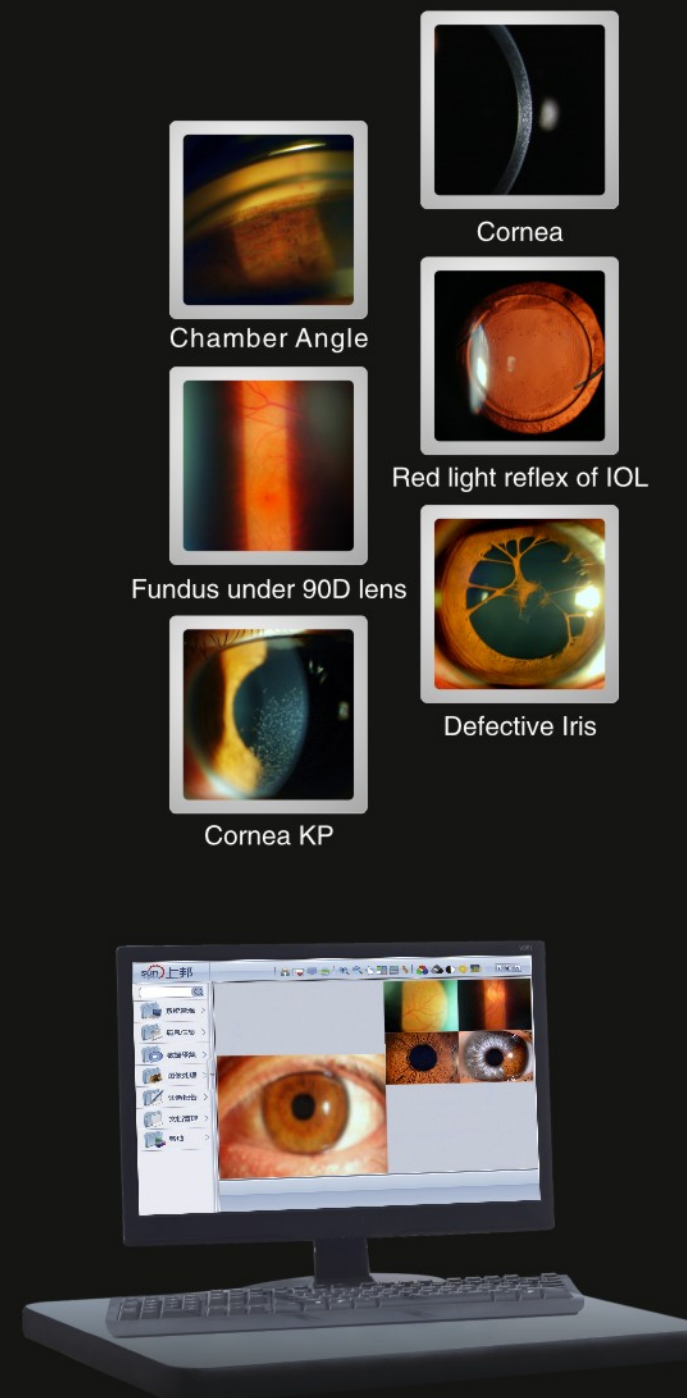
- high cost-effective
- high quality digital camera
- Total magnification: 6X 10x 16x 25 x 40X



Iris posterior synechia Cataract Silk corneal ulcer

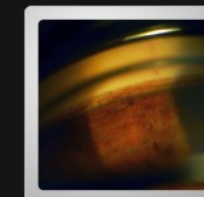


corneal penetrating injury (after operation) Iris fluorescein staining of corneal ulcer

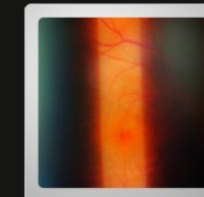


Main characteristic:

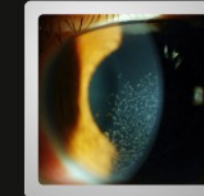
- high pixel (DSLR)
- good depth of field
- Professional software of image analysis



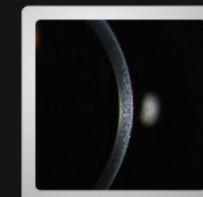
Chamber Angle



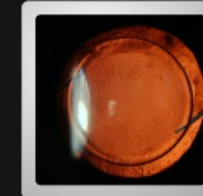
Fundus under 90D lens



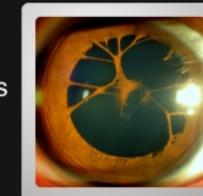
Cornea KP



Cornea



Red light reflex of IOL



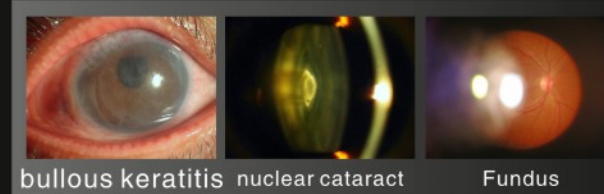
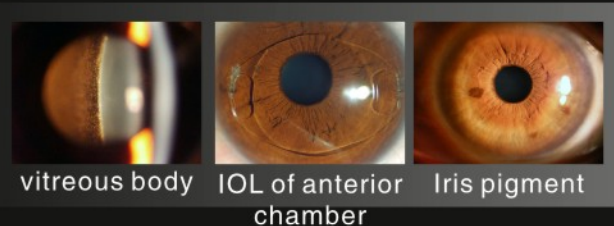
Defective Iris

SK MEDICAL DEVICE

LS-7 Digital Slit Lamp (CCD)

Main characteristic:

- high pixel (3CCD)
- good depth of field
- Professional software of image analysis



LS-4 Ophthalmic Slit Lamp

Main characteristic:

- high cost-effective
- good depth of field
- Total magnification: 6X 10x 16x 25 x 40X

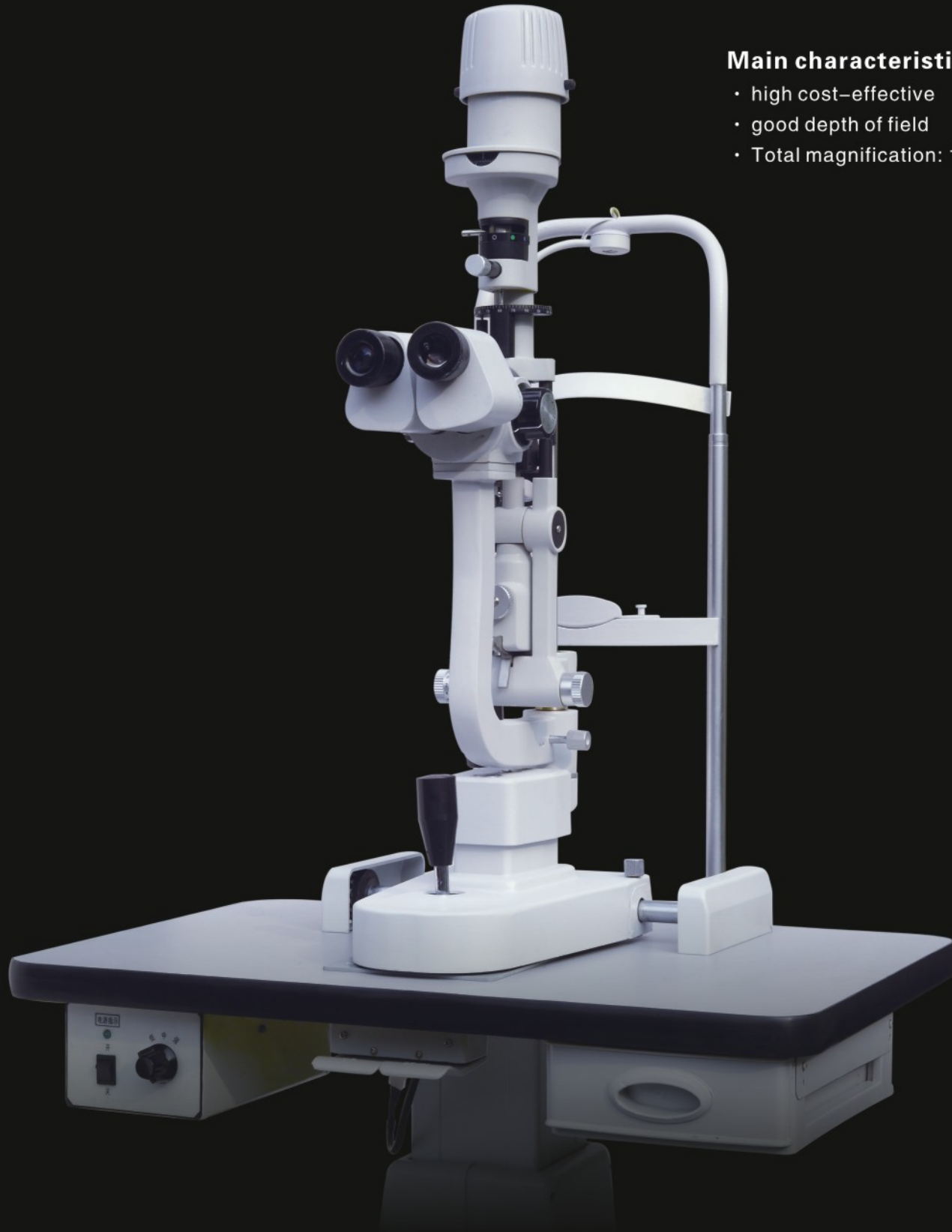


SK MEDICAL DEVICE

LS-3 Ophthalmic Slit Lamp

Main characteristic:

- high cost-effective
- good depth of field
- Total magnification: 10x 16x 25x



Technical parameter of LS-Series Ophthalmic Slit Lamp

Model Specification	LS-3	LS-4	LS-6(digital camera)	LS-6 (DSLR)	LS-7 (CCD)
Pixel			>10.0M	>12.0M	1390*1040 pictuer & video
Type	Parallel Galilean				
Eyepiece	12.5X				
Total Magnification	10X 16X 25X	6X 10X 16X 25X 40X			
Diameter of Visual Field	Φ23, Φ14, Φ8.7mm	Φ37 Φ23 Φ14 Φ8.7 Φ5.7			
Diopter Adjustment	-7D~+7D				
Slit Width	0mm-14mm continuously adjustable				
Slit Height	1mm-14mm continuously adjustable				
Aperture Diameter	Φ14, Φ10, Φ5, Φ3, Φ1, Φ0.2(mm)				
Slit Angle	0° ~ 180° continuously adjustable				
Illumination Tilting	5° 10° 15° 20°				
Filter	Heat absorption, grey, redfree (green), cobalt blue				
Illumination Bulb	12V/50W halogen bulb				
Fixation	Red LED				