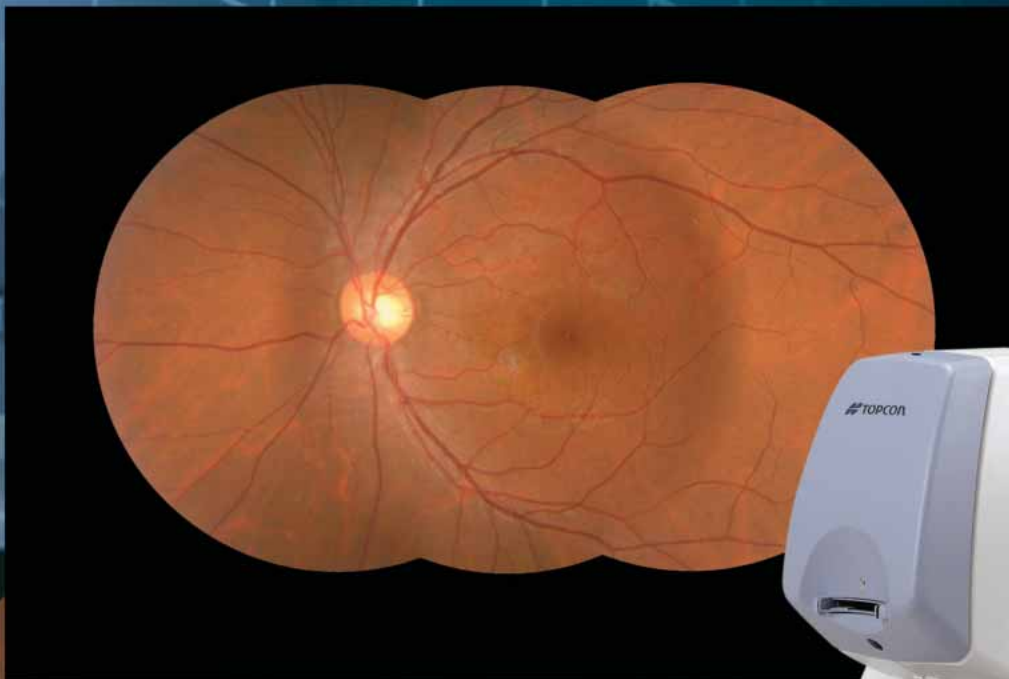


**NON-MYDRIATIC RETINAL CAMERA**

# **TRC-NW200**



# Innovative features in an



*Topcon, the innovative leader in the ophthalmic field for over 60 years. This new instrument has been developed by combining Topcon's advanced technology. The compact TRC-NW200 is easy to use and has been engineered for comfort. It is fully equipped to handle documentation requests for screen captures.*

## More comfortable for both patient and operator

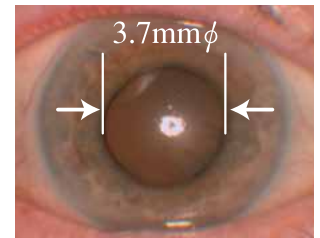
■ TOPCON's unique built-in CCD camera provides 3.1 megapixels of high quality imaging.

### ■ Auto Exposure

The TRC-NW200 employs Topcon's new AE (Auto Exposure). This helps the operator by automatically adjusting the exposure to the necessary intensity for properly illuminated images.

### ■ Smaller Pupil Capability

The innovative design of the TRC-NW200 allows images to be obtained through pupils as small as 3.7mm. This is a tremendous benefit when dealing with elderly patients, with asymmetric pupils or when the patient is taking certain medications.



### ■ Illuminated Operation Panel

The illuminated operation panel facilitates operation in dimly lighted environments.



**NON MYDRIATIC  
RETINAL CAMERA**

**NEW**

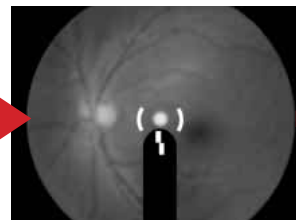
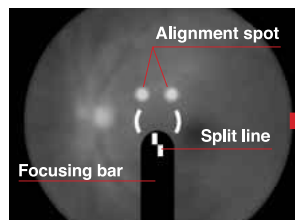
**TRC-NW200**

### ■ Lower Flash Intensity

The sensitivity of the new CCD chip allows a lower flash intensity (3.3W) to be used. This results in more comfort for the patient and better compliance during the imaging procedure.

### ■ Easy Alignment & Focusing

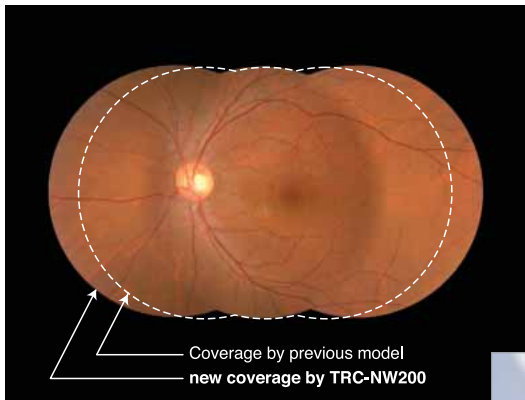
Alignment is easily accomplished by simply overlapping two bright spots on the monitor. Focusing is just as easily accomplished by aligning the two split lines of the focusing bar. This combination assures fast and precise image acquisition.



# advanced digital retinal camera TRC-NW200

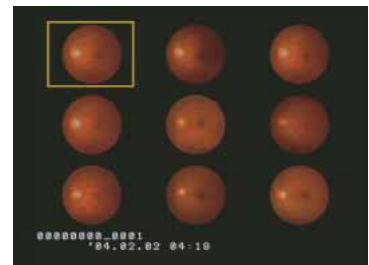
70 years, now proudly introduces the next generation of retinal image screening.... the TRC-NW200. 70 years of experience in retinal imaging with the latest advances in digital and electronic technology. Designed to satisfy all of today's digital screening requests. Screening of diabetic retinopathy, glaucoma, hypertension and numerous other diseases.

## A More Sophisticated and Versatile Digital Solution



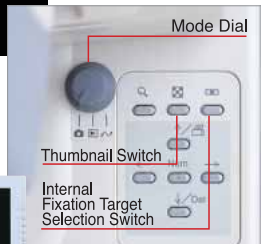
The TRC-NW200 employs one central internal fixation target, two selectable nasal targets and two selectable temporal targets that allows a wider retinal area to be observed.

Images can be shown in a thumbnail display (4-up, 9-up or 16-up configuration), allowing the user to instantly view multiple images. This feature is especially useful when selecting images to be transferred to other media such as a Compact Flash card.



### Enhanced operational ease

With the Mode Dial, capturing, storing on the CF card and USB transfer can be easily selected. In addition, the desired thumbnail displays and fixation point selections can be quickly chosen.



Images can be viewed and stored instantly on a CompactFlash™ Card or sent to a PC.



An analog video printer can be directly connected through the RGB port.



By employing a USB 2.0 connection, faster data transfer is realized. Transferred images can be viewed in software programs such as Adobe® Photoshop, Microsoft® Photo Editor and TOPCON's Quick Viewer.



### IMAGEnet™ 2000 Lite

Efficient basic to comprehensive data management can be achieved with Topcon's IMAGEnet™ 2000 family of software products. For example, with IMAGEnet™ 2000 Lite, the TRC-NW200 provides an advanced total solution for image acquisition, filing & evaluation.



## ■ Specifications

<b>Angle of coverage</b>	45°
<b>Pupil Diameter</b>	3.7 mm or larger
<b>Patient's Diopter Correction Range</b>	without correction lens : -13D to +12D (where spilt lines are used)
	with minus correction lens : -12D to -33D
	with plus correction lens : +9D to +40D
<b>Internal Fixation Targets</b>	central 1 point
	nasal 2 points
	temporal 2 points
<b>Image Quality</b>	CCD 3.15 million pixel images
<b>File Format &amp; Compression</b>	TIFF, JPEG, BMP
<b>Monitor</b>	5.6 inch color LCD
<b>Base Movement</b>	Longitudinal movement 46 mm
	Lateral movement 100 mm
	Fine movement 16 mm
	Vertical movement 30 mm
<b>Chinrest</b>	Vertical movement 60 mm
	Fixation Target : Optional (Green LED)
<b>Memory Media</b>	CompactFlash™ card (16MB / standard accessory)
<b>Interface</b>	USB 2.0 ( USB cable / standard accessory), RGB
<b>Power Consumption</b>	80VA (Normal),400VA(Max)
<b>Power Supply</b>	Europe : AC110,120,230,240V 50/60Hz Except Europe : AC100,120,220,240V 50/60Hz
<b>Dimensions</b>	272mm(W) x 505mm(D) x 560mm (H)
<b>Weight</b>	24Kg

## ■ Optional Accessory



External fixation target

Microsoft® is registered trademark or trademark of Microsoft Corporation in the United States and / or other countries.

CompactFlash™ is a trademark of SanDisk Corporation.

Adobe Photoshop is a registered trademark of Adobe Systems Incorporated and its subsidiaries in each country.

\*Subject to change in design and/or specifications without advanced notice.

### **IMPORTANT**

In order to obtain the best results with this instrument, please be sure to review all user instructions prior to operation.