

**NON-MYDRIATIC RETINAL CAMERA**

# **TRC-NM6S**



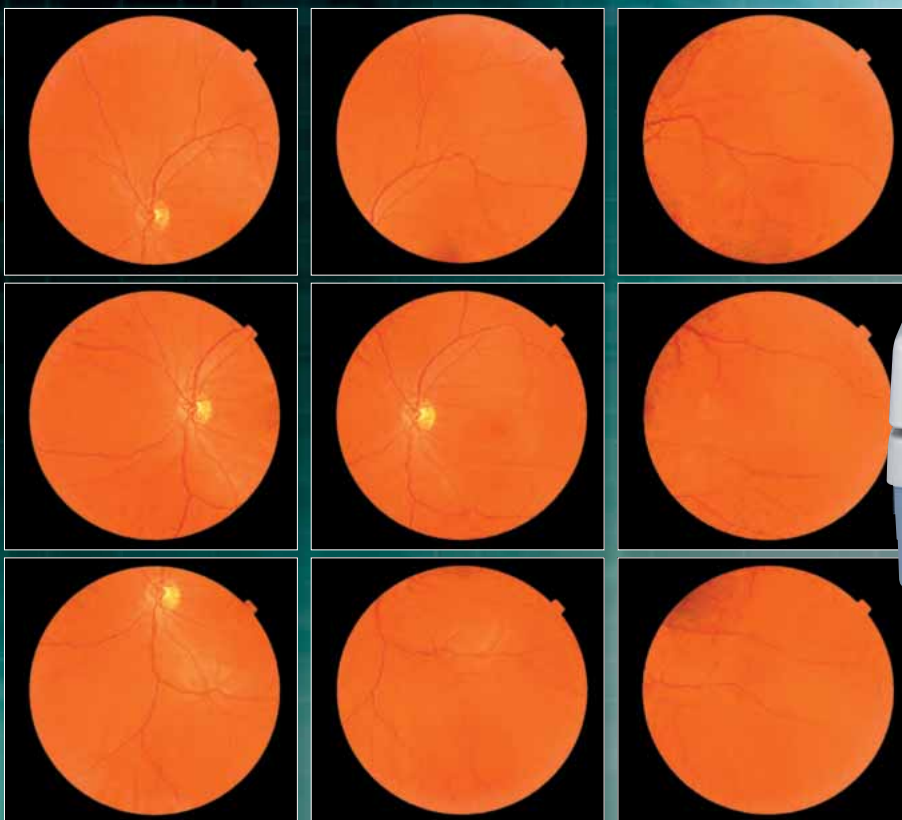
# THE TOTAL IMAGING SOLUTION

## An Advanced Solution to Non-Mydriatic Retinal Imaging

In this age of rapid advances in digital and electronic technology, Topcon leads the field with the versatile non-mydriatic retinal camera, the TRC-NW6S. When combined with the latest CCD camera technology and IMAGEnet™ Lite imaging software, the fully integrated imaging system produces sharp - color accurate images that make diagnosis faster and more accurate.

The total imaging solution includes the TRC-NW6S and AutoMosaic software, which create panoramic images of the retina using the built-in peripheral fixation points of the TRC-NW6S.

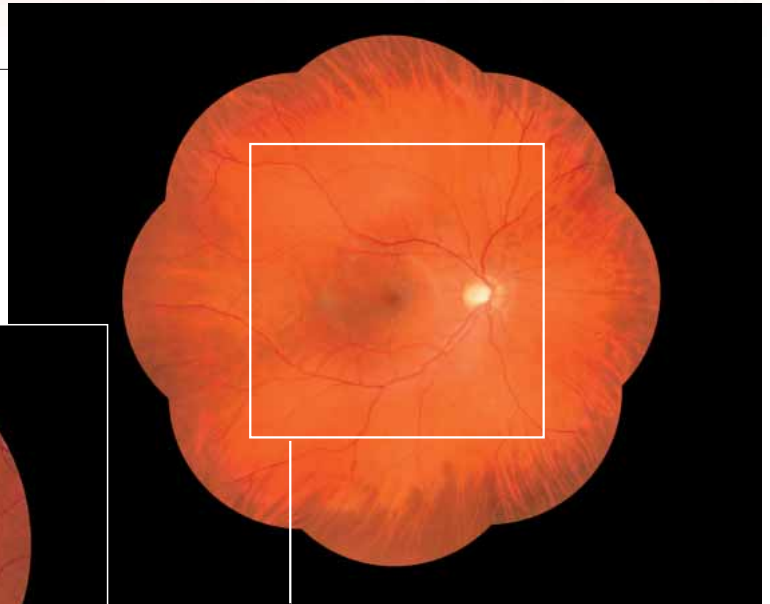
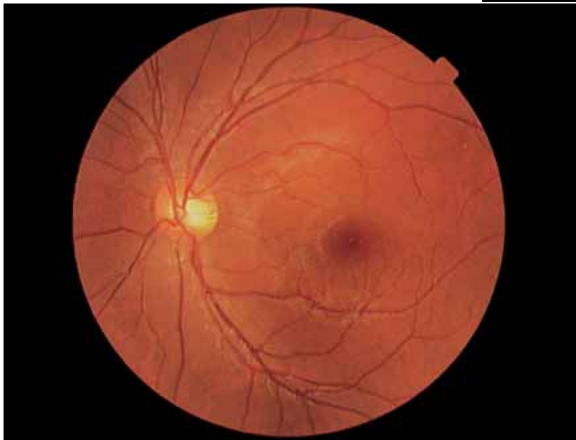
The TRC-NW6S is the core component of this imaging solution and provides a state-of-the-art electronic imaging interface that will stay current with future technological changes.



NON-MYDRIATIC RETINAL CAMERA  
**TRC-NW6S**

## AutoMosaic Imaging

The AutoMosaic software module for IMAGEnet™ Lite easily creates a single image panoramic view of the retina. The software includes image contrast and edge adjustments to create a realistic panoramic view.

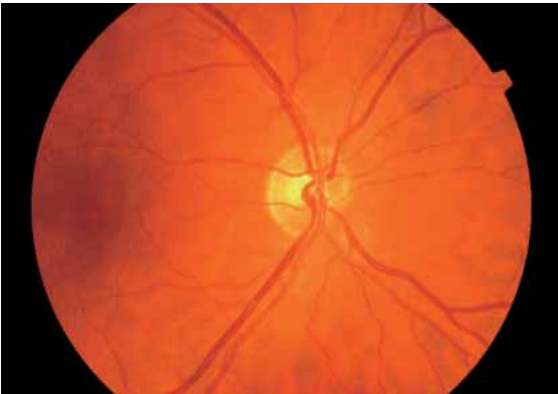


Conventional 45° angle of coverage

- Wide 85° angle of coverage using the nine internal fixation points.
- Panoramic image of the retina using AutoMosaic Software.

## Anterior Photography

In addition to retinal images, the TRC-NW6S can easily capture images of the anterior portion of the eye.



## Full Screen Image with 30° Angle of Coverage

In addition to the 45° angle, it is possible to use the 30° angle coverage to capture an enlarged image of the retinal surface. This magnified image contains more detailed information and is especially helpful when evaluating the optic disc.

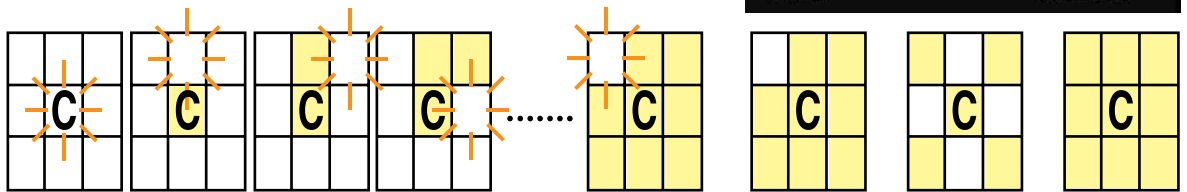
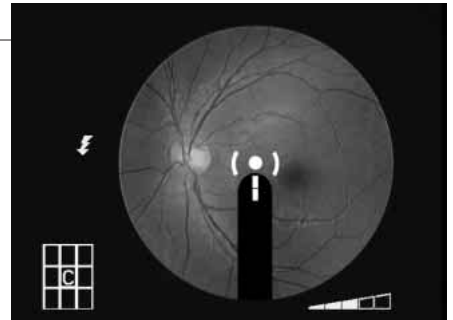
## THE TOTAL IMAGING SOLUTION

Two of the most common causes of blindness are glaucoma and diabetic retinopathy. It is important to identify these disorders in their early stages and track them over time. Therefore, quick and convenient screening and diagnosis of the retina during normal examination of patients contributes greatly to reducing the incidence of blindness.

### Innovative Peripheral Internal Fixation Points

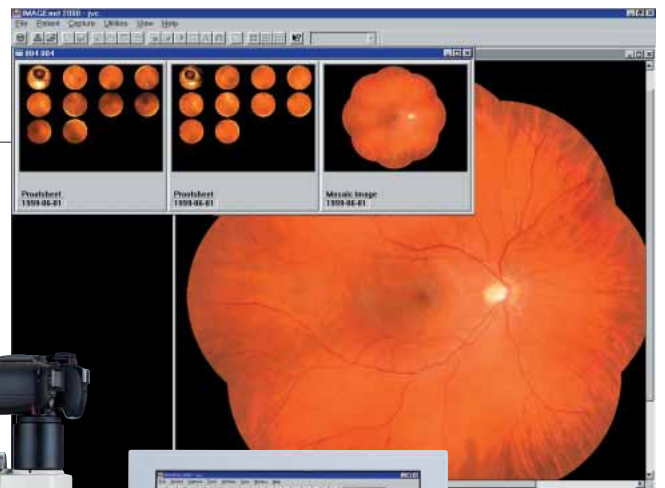


The TRC-NW6S incorporates one central and eight peripheral fixation points that cover 85° of the retina. There are several fixation patterns provided, which can be chosen and set as defaults. An alignment scale will appear on the monitor for each fixation point to give precise image positioning.



### IMAGEnet™ Lite and AutoMosaic Software (optional)

When connected with the IMAGEnet™ Lite System, the TRC-NW6S provides a total imaging solution for advanced retinal imaging. All information from the TRC-NW6S, including - right eye or left eye and fixation positions, is automatically transferred to IMAGEnet™ Lite, along with the images. IMAGEnet™ Lite's AutoMosaic software is especially designed for the TRC-NW6S to create a mosaic image from up to 9 different fields of the retina. The complete system provides image capture, viewing, editing, networking and storage capability.

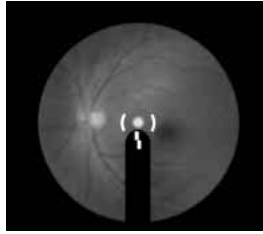
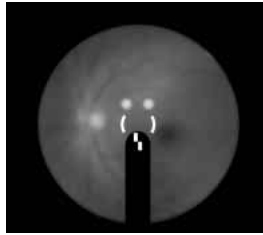


**IMAGEnet™**  
L i t e  
**DIGITAL IMAGING SYSTEMS**

## OPERATIONAL CONVENIENCE

### Easy Alignment

Alignment is easily accomplished by overlapping the two bright spots on the monitor, assuring fast and precise operation. Because the alignment spot is always in the monitor view, the operation is easy and reliable.



### Easy Focusing

Focusing is easily accomplished by aligning the split lines within the focusing bar. For better monitor viewing, the focusing bar may be turned on or off.

### New Ergonomic Design

A totally new design makes the TRC-NW6S compact and ergonomic. The instrument controls, viewing monitor and patient are all in direct alignment for easy access, making it easy to obtain excellent retinal images.

### Auto Flash Intensity

When the angle of coverage is changed by the user, the existing flash setting will be automatically corrected. If required, a manual setting of up to 9 steps is also possible.

### Illuminated Operation Panel

An illuminated operation panel makes operation easy in dim light settings.

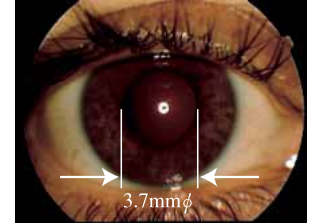


### Electric Chinrest Movement for Operational Ease

The control buttons for the electrical elevation of the chinrest are conveniently located next to the joystick for quick operation during photography.

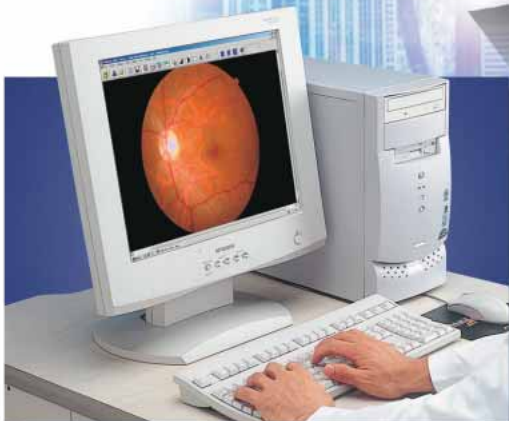
### Small Pupil Capability

It is possible to photograph through a pupil as small as 3.7mm  $\phi$  by using the 30° angle of coverage.



## READY FOR TELE-OPHTHALMOLOGY

The TRC-NW6S and IMAGEnet™ Lite software package is ideal for sharing images with trained practitioners when screening patients from a remote location.



## Specifications

<b>Angle of coverage</b>	45°, 30°
<b>Pupil diameter for photography</b>	45°: 4.0mm $\phi$ or more, 30°: 3.7mm $\phi$ or more
<b>Patient diopter correction range</b>	Without correction lens : -13D to +12D (where split lines are used)
	With minus correction lens : -12D to -33D
	With plus correction lens : +9D to +40D
<b>Peripheral fixation</b>	Internal 8 points
<b>Flash Intensity</b>	Automatically changed corresponding to the angle of 45° and 30°
	Manual setting in 9 steps is also available
<b>Data picturing</b>	Simultaneously name plate imaging
<b>Data filing system</b>	Data (R/L, angle and 8 fixed position) output to IMAGEnet™ Lite is available
<b>Power source</b>	Frequency : 50/60Hz Voltage : AC110, 120, 230, 240V selectable
<b>Weight</b>	Body : 24,5kg, TV relay lens :1.0kg
<b>Dimensions</b>	272(W)x 505(D)x 530(H)mm with TV relay lens
<b>Power consumption</b>	400VA(Maximum), 100VA(Normal)



### Optional Accessory

Adjustable Instrument Table

**AIT-15**

### Required Additional Equipment

The TRC-NW6S requires a digital imaging system to capture and store the images. Topcon has developed the IMAGEnet™ Lite software package as an advanced imaging solution for the TRC-NW6S. Various versions and configurations of the IMAGEnet™ Lite System are available.

\*Subject to change in design and/or specifications without advanced notice.

#### IMPORTANT

In order to obtain the best results with this instrument, please be sure to review all user instructions prior to operation.